



# USA 3036-SB

METRIC

OPERATION MANUAL  
&  
PARTS LISTS



# TABLE OF CONTENTS

---

TABLE OF CONTENTS.....	1
SERVICE INSTRUCTIONS .....	2
WARRANTY.....	3
DESCRIPTION OF USA 2024-SB .....	4
SAFETY ISSUES.....	5
SAFETY ISSUES.....	6
SPECIFICATIONS .....	8
SPECIFICATIONS .....	9
SPECIFICATIONS .....	10
SET-UP PROCEDURES.....	11
SET-UP PROCEDURES.....	12
SET-UP PROCEDURES.....	13
SET-UP PROCEDURES.....	14
SET-UP PROCEDURES.....	15
OPERATING INSTRUCTIONS .....	16
MAINTENANCE .....	17
TROUBLESHOOTING.....	18
RECOMMENDED SPARE PARTS LIST .....	19
APPENDIX A – ILLUSTRATIONS AND PARTS LISTS.....	20

# SERVICE INSTRUCTIONS

---

## Service

This is the Interpack Model USA 3036-SB Carton Sealing Machine you ordered. It has been set up and tested in our factory with Intertape brand tapes. If any problems occur when operating this equipment and you desire a service call or phone consultation, please contact **Intertape Technical Support** 1-800-972-4675.

Please provide the customer support coordinator with the machine model number and serial number. If you have a technical question that does not require an immediate response, you may fax it to 1-800-462-1293

## Replacement Parts

Order parts by item number, part name and quantity required. Replacement parts are available from your Authorized Interpack Distributor exclusively. Should you require assistance selecting the correct part, you may call:

Intertape Polymer Group  
Interpack Machinery

Tel: 1-800-972-4675  
Fax: 1-800-462-1293

## WARRANTY

---

**EQUIPMENT WARRANTY AND LIMITED REMEDY:** The following warranty is made in lieu of all other warranties, express or implied, including, but not limited to, the implied warranty of merchantability, the implied warranty of fitness for a particular purpose, and any implied warranty arising out of a course of dealing, a custom or usage of trade:

Intertape sells its Model USA 3036 -SB Carton Sealing Machine with the following warranties:

1. The HSD® 2000 ETII Tape Heads' knife blades, springs and wipe down rollers will be free from all defects for a period of ninety (90) days. A lifetime warranty is available after delivery with an Annual Tape Agreement and completed Pioneering Protection Warranty form. Contact your Intertape representative for further details.
2. All other HSD® 2000 ETII Tape Head parts will be free from all defects for one (1) year after delivery.
3. The Gear Motors will be free from defects for one (1) year after delivery.
4. All other components will be free from defects for one (1) year after delivery.

If any part is proven defective within its warranty period, then the exclusive remedy and Intertape's and the seller's sole obligation shall be, at Intertape's option, to repair or replace the part, provided the defective part is returned immediately to Intertape's factory or an authorized service station designated by Intertape.

A part will be presumed to have become defective after its warranty period unless the part is received or Intertape is notified of the problem no later than five (5) calendar days after the warranty period.

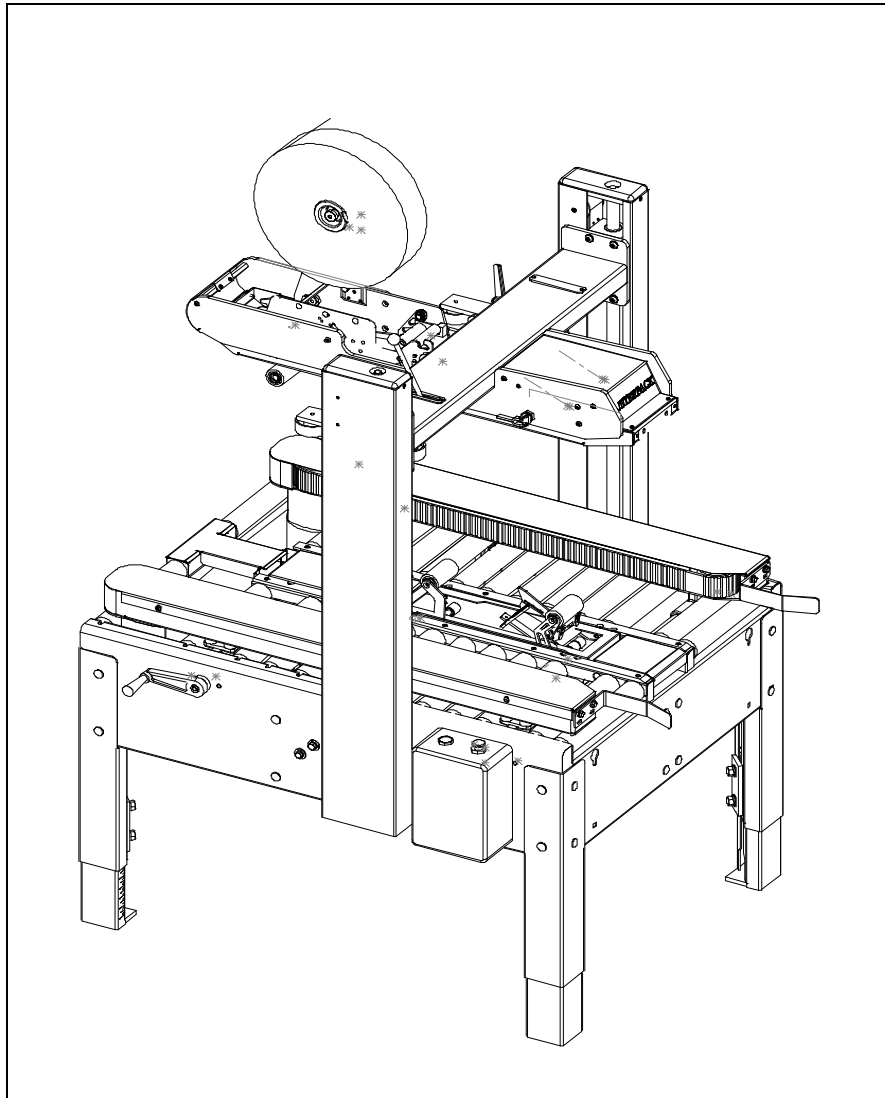
If Intertape is unable to repair or replace the part within a reasonable time, then Intertape, at its option, will replace the equipment or refund the purchase price. Intertape shall have no obligation to install the repaired or replacement part.

Intertape shall have no obligation to provide or pay for the labour required to install the repaired or replacement part. Intertape shall have no obligation to repair or replace (1) those parts failing due to operator misuse, carelessness, or due to any accidental cause other than equipment failure, or (2) parts failing due to inadequate cleaning, improper operating environment, improper utilities or operator error.

**LIMITATION OF LIABILITY:** Intertape and seller shall not be liable for direct, indirect, special, incidental or consequential damages based upon breach of warranty, breach of contract, negligence, strict liability or any other legal theory.

The foregoing Equipment Warranty and Limited Remedy and Limitation of Liability may be changed only by written agreement signed by authorized officers of Intertape and seller.

## DESCRIPTION OF USA 3036 - SB



**Figure 1**

The Interpack USA 3036-SB Carton Sealing Machine with HSD® 2000 ETII Tape Heads is designed to apply Intertape brand pressure sensitive carton sealing tape to the top and bottom centre seam of regular slotted corrugated cartons. The USA 3036-SB is manually adjustable to a wide range of carton sizes (see Carton Size Capacity, page 10) and permits processing of underfilled and overfilled applications by means of compression guides and a one-inch floating top tape head assembly. The self centring Side Belt Drive system makes carton width adjustment effortless. The USA 3036-SB Carton Sealer features mirror image controls to facilitate its adaption into an existing conveyor line.

---

## **SAFETY ISSUES**

---

There are a number of safety labels used on Interpack Carton Sealers. These labels are placed at different locations (refer to figure 2) on the machine to warn operators and service personnel of possible dangers. Please read the labels on the machine and the following safety precautions before using the machine.

- ✓ **Read this manual for other important safety operating and service information.**
- ✓ **Only trained personnel are to operate and service machine.**
- ✓ **Wear safety glasses.**
- ✓ **Shut off power to machine before adjusting.**
- ✓ **Unplug electrical power before servicing.**
- ✓ **All covers and guards must be in place before operating.**
- ✓ **Stay clear of moving parts which can shear and cut.**
- ✓ **Never operate the Tape Heads with the Knife Guard removed.**
- ✓ **Turn electrical supply off before servicing the Tape Heads, including tape loading and threading.**

# SAFETY ISSUES

## PLACEMENT OF WARNING LABELS

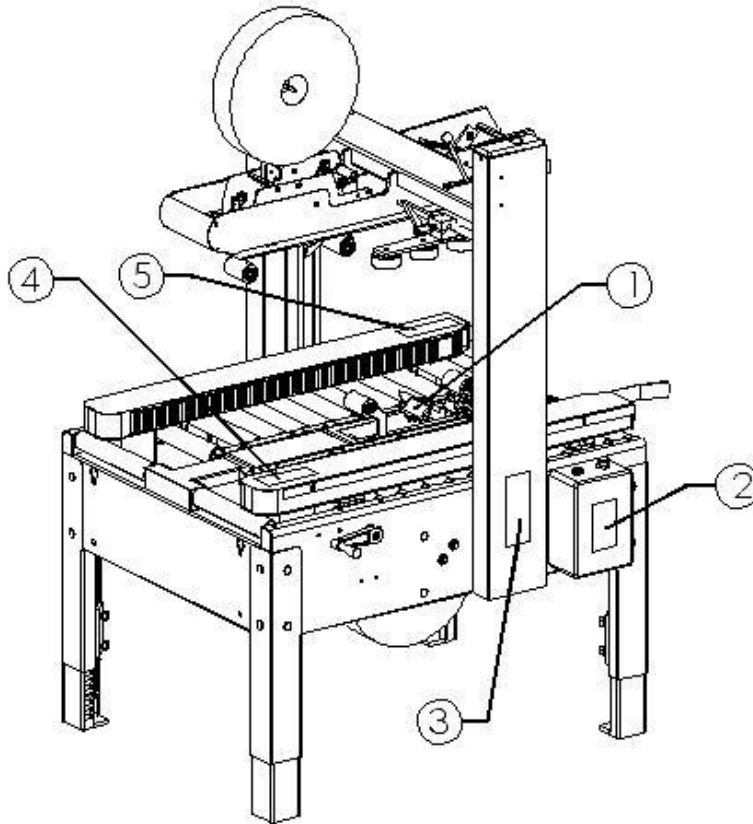


Figure 2

1)

**⚠ WARNING**

Sharp  
Cutting  
Blade

(The same label can be found on the top  
tape head as well)

2)





3)

**⚠ WARNING**


**OPERATION / SERVICE**

- Only trained people are to operate and service machine.
- Shut off power to machine before adjusting.
- Unplug electrical power before servicing.

---

**MACHINE MANUAL**  
For other important safety, operating and service information read this machine's manual.


---

**EYE HAZARD**  
Wear Safety Glasses which conform to ANSI Std. Z87.1 or EN 166 

---

**COVERS AND GUARDS**  
All covers and guards must be in place before operating machine.

---


**ELECTRICAL SHOCK**  
Hazardous voltages may cause personal injury.   
Only authorized and qualified personnel are to service electrical enclosures.

---

**FAILURE TO FOLLOW THE ABOVE COULD RESULT IN SEVERE INJURY.**

4)

**⚠ WARNING**



Moving machine parts can crush, cut and shear.  
Disconnect and lockout all power before servicing machine.  
Failure to follow the above can result in severe personal injury.

5)

**⚠ WARNING**



Moving parts can shear and cut.  
Disconnect and lockout all power before servicing machine. Failure to follow the above can result in severe personal injury.

**Note: Should any of the safety labels shown in Figure 2 be damaged or destroyed, replacements are available.**

---

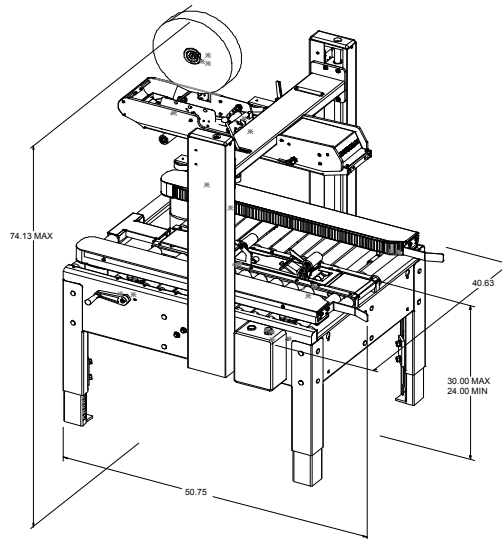
# SPECIFICATIONS

---

## Machine Dimensions

Overall outside dimensions:

- Height: 90 inches maximum
- Length: 50.75 inches
- Width: 52 inches



**Figure 3**

## Machine Weight

The machine weighs 350 lbs.

## Power Requirements

Electrical - 115 VAC, 60 HZ, 9.6 A.

Standard electrical equipment:

- Two (2) 1/3 H.P. gear motors,
- A neoprene power cord, and
- A grounded plug.

Contact your Intertape representative for power requirements not listed above.

## Operating Speed

Belt speed is 82 feet per minute. Actual production rate is dependent on operator's dexterity and the case size mix.

---

## **SPECIFICATIONS**

---

### **Operating Conditions**

Use in a dry, relatively clean environment at 40° to 105° F (5° to 40° C) with clean dry cartons.

### **Tape**

**1) General**

Use Intertape brand Pressure Sensitive Carton Sealing Tape.

**2) Tape Width**

2.5 to 3 inch wide tape (65 to 75 mm) maximum.

**3) Tape Roll Diameter**

Maximum of 16 inches (405 mm) on a 3-inch (76.2 mm) diameter core.  
(Accommodates all Intertape brand film tape machine roll lengths).

**4) Tape Application Leg Length – Standard**

2.5 inches (+0.25", -0") (63.5 mm, +6.3 mm, -0 mm).

**5) Tape Application Leg Length – Optional**

2 inches (+0.25", -0") (50.8 mm, +6.3 mm, -0 mm). Refer to HSD® 2000 ET II Tape Head manual for adjustment of tape application leg length.

### **Box Board**

Style: regular slotted containers (RSC)  
125 to 275 psi bursting test, single or double wall B or C flute.

### **Carton Weight Capacity**

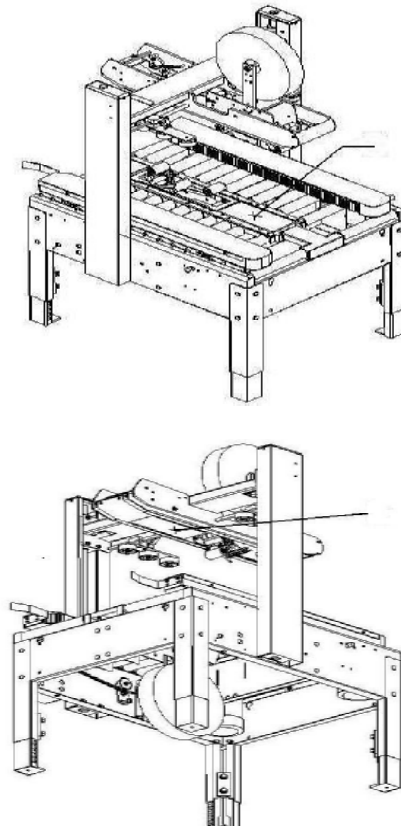
Up to 85 lbs.

# SPECIFICATIONS

## Carton Size Capacity

	Height (inches)	Width (inches)	Length (inches)	
<b>Standard</b>	<i>minimum</i>	4.5	4.5	6
	<i>maximum</i>	36	30	Infinite
<b>Optional</b>	<i>minimum</i>	2*	8	6
	<i>maximum</i>	36	30	Infinite

\*The optional carton size of 2 inches high by 8 inches wide is achieved by the offset design of the Tape Heads. Remove the gap filler plates to process these low cartons. (Refer to Figure 4)



**Figure 4**

---

# SET-UP PROCEDURES

---

## Receiving and Handling

The machine is shipped to the customer in a box and fixed to a pallet.

- Remove the strapping and the staples at the bottom of the box.
- Lift off the box cover and sleeve.
- Remove the mounting bolts and nuts, which secure the USA 3036-SB to the shipping pallet.
- Lift the machine off the pallet and install it on your packaging line.
- Remove all tie wraps and other shipping materials.

**Note:** *After unpacking the machine, look for any damage that may have occurred during shipping. Should the machine be damaged, file a claim with the transport company and notify your Intertape representative.*

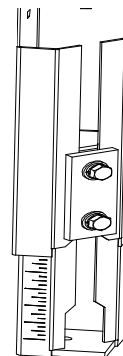
## Setting-up

### 1) General

The Carton Sealer must be installed on a near level ground.

Ensure that the machine is level and firmly on the ground (no rocking). Adjust the roller height with the four (4) telescopic adjustment legs to accommodate conveyor heights from 24 to 30 inches.

To adjust the Carton Sealer height, jack up the machine to give ample room to extend the legs. Using a 9/16" box end wrench, loosen the eight (8) 1/2" hex head bolts. Adjust the legs to the desired conveyor height and tighten the bolts. Etched scales on the legs facilitate proportionate leveling.



**Figure 5**

---

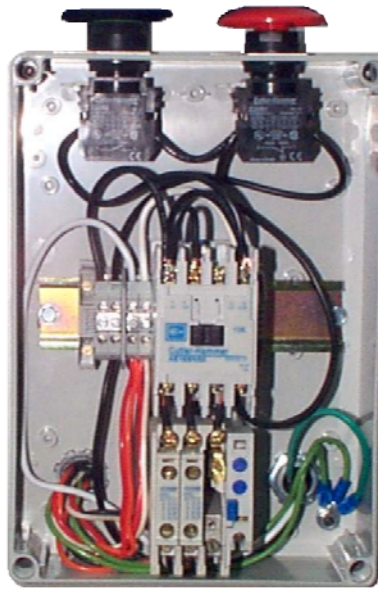
## SET-UP PROCEDURES

---

Customer supplied infeed and exit conveyors (or rollers) must be level with the machine, otherwise, the performance of the machine may be affected. The customer-supplied infeed conveyor (if used) should provide straight and level entry. The customer-supplied exit conveyor (if used) should be straight and declined no more than 1/4 inch per foot away from the machine.

### 2) Electrical Connection

The electrical control can be located on either side of the Carton Sealer for customer convenience. It contains the green "on" push button and the red "E-Stop" mushroom push button, which is to be used both for emergency stops as well as regular halting of the machine.



**Figure 6**

An eight (8) foot standard three conductor power cord with plug is provided for 115 V, 60 Hz, 15 amp electrical service. The servicing receptacle must be properly grounded. Before the machine is plugged into the receptacle, ensure that all materials are removed from the machine. The electrical control is protected with an automatic circuit breaker with resettable overload.

---

## SET-UP PROCEDURES

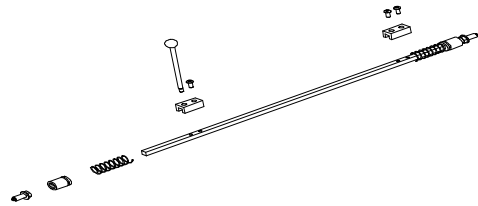
---

### 3) Mirror Image Controls

Other than the electrical control box, there are three (3) other mirror image controls that can be placed on the right or the left hand side of the machine for easier operation.

#### 1) Single Locking System

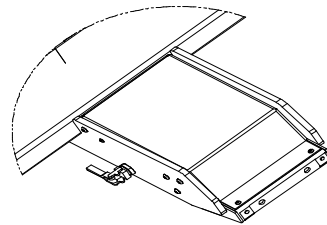
This system is located on the bridge of the Top Tape Head Box and is used to adjust the height of the Top Tape Head to the height of the carton. The lever is assembled on the left hand side. To change sides, simply remove the cap on the right, unscrew the lever and screw it back on the right side. Replace the cap on the left side.



**Figure 7**

#### 2) Locking Floating System

The lever for this system is located on the left side of the Top Tape Head Box. It has toggle clamp used to lock or unlock the floating system. For opposite side installation: remove red cover cap on right hand side, unscrew the toggle clamp with  $\frac{3}{4}$ " wrench, replace one with the other, secure the toggle's position with the locknut.



**Figure 8**

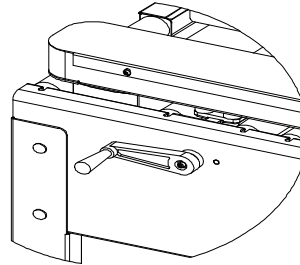
---

## SET-UP PROCEDURES

---

### 3) Width Adjustment Handle

The foldable handle that is used to adjust the width of the self-centering side rails is located on the left hand side of the machine. Unscrew and change sides.



**Figure 9**

### 4) **Tape Loading and Threading**

#### A) Tape Loading

**WARNING!** *TURN OFF ELECTRICAL POWER SUPPLY AND DISCONNECT THE POWER CORD FROM THE ELECTRICAL SUPPLY BEFORE BEGINNING TO WORK ON THE TAPE HEADS OR TO LOAD TAPE. IF POWER CORDS ARE NOT DISCONNECTED, SEVERE INJURY TO PERSONNEL COULD RESULT.*

The HSD2000<sup>®</sup> ET II/2" tape heads accommodate 3-inch wide tape rolls, while the optional HSD2000<sup>®</sup> ET II/3" tape heads accommodate 2-inch wide rolls. See the label on the side of the HSD2000<sup>®</sup> ETII tape head for the loadable tape sizes. Push the roll of tape onto the mandrel with the adhesive side up (refer to threading diagram on the HSD2000<sup>®</sup> ETII tape head) until the core is set against the mandrel flange. This ensures the tape will be aligned when feeding into the tape head.



---

## SET-UP PROCEDURES

---

### B) Tape Threading

**WARNING!**     *THE KNIFE CONTAINED IN THE TAPE HEAD IS EXTREMELY SHARP. USE CAUTION WHEN REMOVING THE BLADE GUARD AND THREADING THE TAPE TO AVOID PERSONNEL INJURY.*

To thread the tape in the upper Tape Head, you do not require any special tools.

- Push the Tape Head towards the front of the machine and lift up.
- Pull approximately twelve (12) inches of tape from the roll and fold in half lengthwise. This allows you to thread the tape without it adhering to the guide and clutch rollers inside the Tape Head.
- Follow the tape-threading diagram on the side plate of the HSD® 2000 ETII Tape Head. Refer to your Tape Head manual for further information if required.
- Remove the blade guard from the knife in the Tape Head.
- Cut off the folded tape.
- Replace the upper Tape Head to its initial position.

To thread the lower Tape Head, no special tools are required.

- Lift the top Tape Head box to the uppermost position.
- Remove the lower Tape Head by grasping the tape application rollers and lifting straight up.
- Pull approximately twelve (12) inches from the roll and fold in half lengthwise. This allows you to thread the tape without it adhering to the guide and clutch rollers inside the Tape Head.
- Follow the tape-threading diagram on the side plate of the HSD® 2000 ET II Tape Head. Refer to your Tape Head manual for further information if required.
- Remove the blade guard from the knife in the Tape Head.
- Cut off the folded tape.
- Replace the lower Tape Head to its initial position.

---

## OPERATING INSTRUCTIONS

---

Once the HSD® 2000 ETII Tape Heads (both bottom and top) have been loaded with tape and threaded, the machine is ready to process regular slotted cartons. The following instructions are presented in the order recommended for processing cartons successfully through the USA 3036-SB Carton Sealing machine.

1. Unlock the Single locking System and raise the Top Tape Head Box to its maximum.
2. Turn the Width Adjustment Handle to open the drive base in order to allow an empty test carton to slide on the machine
3. Place an empty test carton with the flaps held in closed position under the bridge of the Top Tape Head Box.
4. Adjust the self-centering side rails by turning the Width Adjustment Handle.
5. Block the Floating System by pushing the toggle clamp to "lock".
6. Lower the Top Tape head Box until it touches the top of the carton. Lock the Single Locking System.
7. Adjust the Compression Guides on the side of the carton.
8. Remove the test carton from the machine.
9. Ensure that the electrical power is on.
10. Switch the machine "on" with the start push button.
11. Process the first carton with the flaps in the closed position.
12. When the carton exits the Carton Sealer, process the next carton.

**WARNING!**     **ENSURE THAT THE OPERATOR'S HANDS ARE AWAY FROM THE MOVING BELTS OF THE SIDE DRIVE BASE ASSEMBLY.**

**Note:** *Should any problem occur during processing that requires halting the machine, press the red "E-Stop" mushroom button.*

**Note:** *The machine should never be washed down or subjected to conditions causing condensation on components.*

---

## **MAINTENANCE**

Depending on usage, grease acme shaft on a three months interval. Open up drive base by winding handle, apply grease to the acme shaft between the cast iron drive base supports, then close the drive base and repeat application to the outside of cast iron drive base supports. Recommended lubricants are: 1<sup>st</sup> Bacon 325 (ESSO brand), 2<sup>nd</sup> graphite base greases, 3<sup>rd</sup> standard ball-bearing grease.

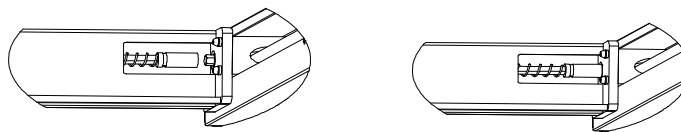
Spray column shaft once a month with a silicon based dry film lubricant. This won't attract dust and lint from the surroundings.

No other lubrication is necessary to operate the machine.

## TROUBLESHOOTING

Interpack Carton Sealers are fabricated with high quality components that provide trouble-free operation for a long period. However, should a problem occur, we recommend that you consult the following table. If the problem you encounter is not discussed in this table, call Intertape Customer Service Department (see page 2 of this document).

TROUBLE	POSSIBLE CAUSES	SOLUTIONS
Main power is turned "on" and nothing happens.	Overload protection by circuit breaker.	Check that all circuits are "on".
Cartons are not taped properly.	Tape Head is not adjusted correctly.	Refer to Tape Head manual.
Single Locking System is locked, still the Bridge of Top Tape Head Box is loose on one side	Brass pin is worn out and has lost contact with column shaft.	Lock Tape Head Box at its maximum height. On loose side, under the bridge, remove socket completely from screw head, unlock the Tape Head Box with the lever and re-insert socket. Refer to Figure 11



**Figure 11**

## RECOMMENDED SPARE PARTS LIST

---

We recommend that you stock the following spare parts.

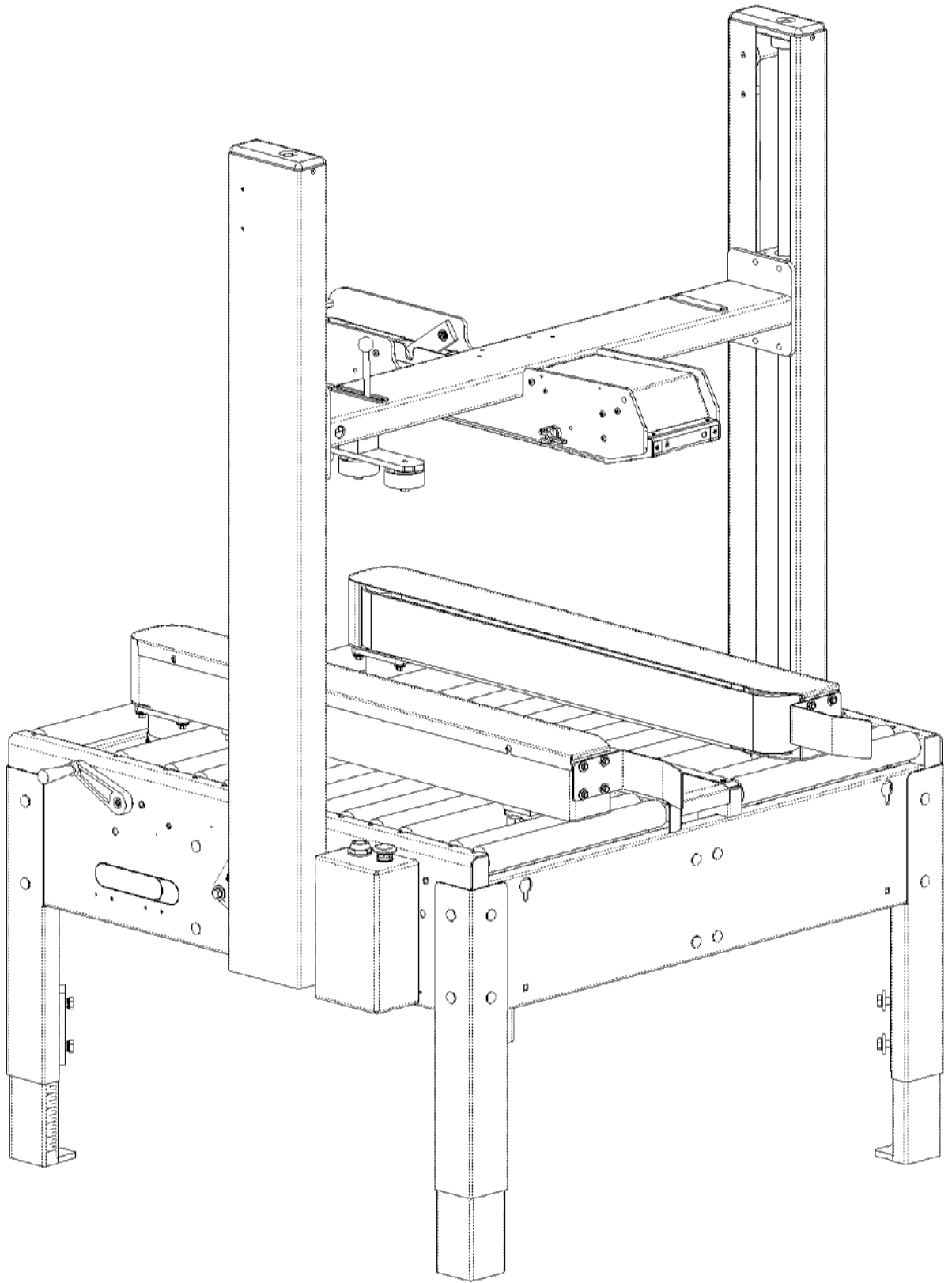
DESCRIPTION	ITEM NUMBER	RECOMMENDED QUANTITY
100 mm drive belts	UPM2565	2
Drive pulley	UPM9681	2
Bearing for pulley	UPM0324	2
Flanged screw ½-13 l.h.	UPM0698	1
Flanged screw ½-13 r.h.	UPM0699	1
Linear bearing LM-25UU	LM25UU	2
Locking handle for compression guide	UPM7522	1
Bumpers	UPM2251	6
Plastic Rollers PVC	UPM7645	3
Pivot extension spring	UPM1042	2

# APPENDIX A – ILLUSTRATIONS AND PARTS LISTS

---

## APPENDIX CONTENTS

CENTERING MECHANISM (illustration).....	A-22
CENTERING MECHANISM (parts list).....	A-23
BASE, STRUCTURE (illustration).....	A-24
BASE, STRUCTURE (parts list).....	A-25
FLOATING TOP HEAD (illustration).....	A-26
FLOATING TOP HEAD (parts list).....	A-27
DRIVE BASE (illustration).....	A-28
DRIVE BASE (parts list).....	A-29
SINGLE LOCKING (illustration).....	A-30
SINGLE LOCKING (parts list).....	A-31
COLUMN (illustration).....	A-32
COLUMN (parts list).....	A-33
COMPRESSION (illustration).....	A-34
COMPRESSION (parts list).....	A-35
TABLE (illustration).....	A-36
TABLE (parts list).....	A-37





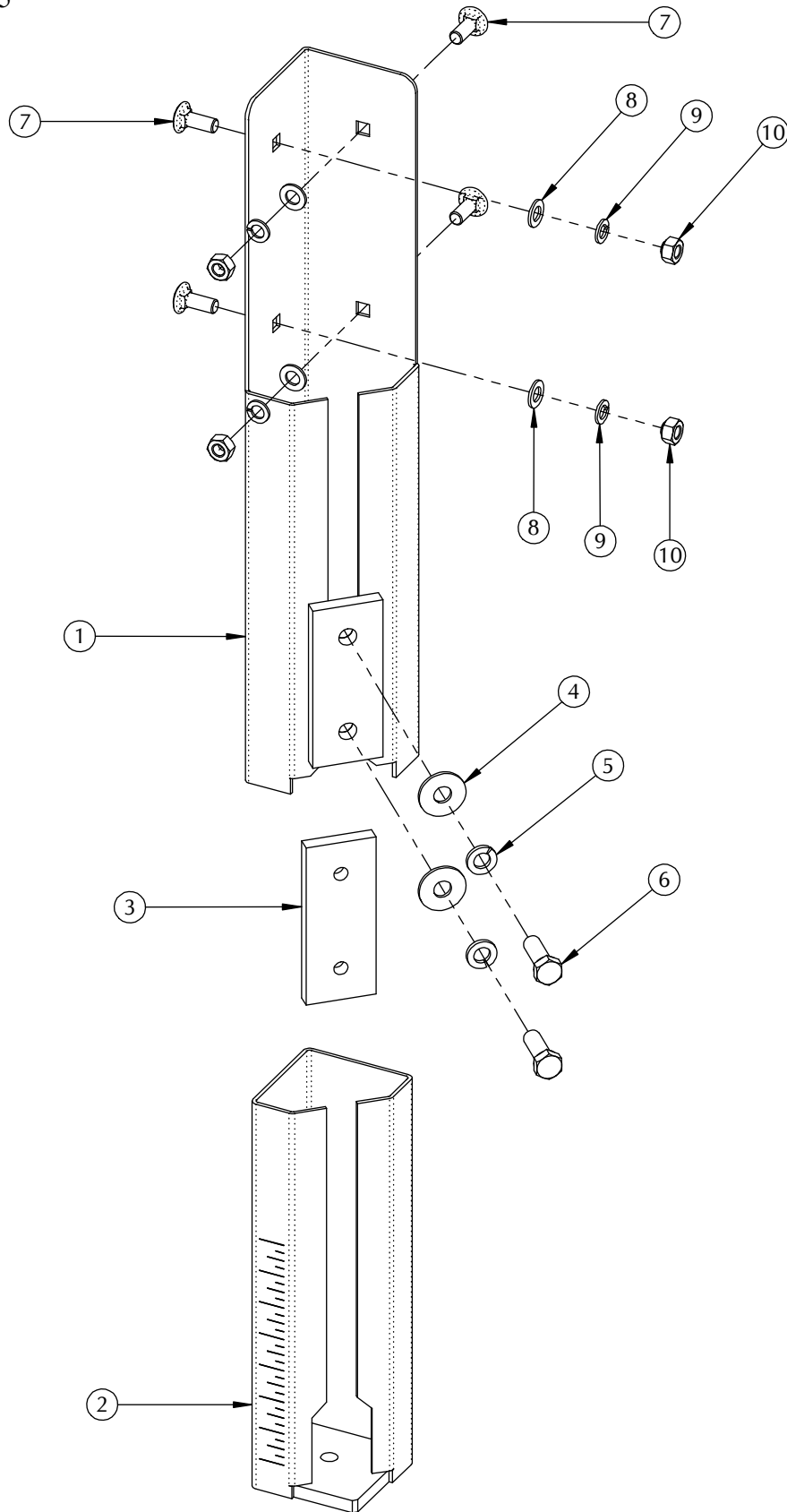




USM8110

ITEM	PART #	DESCRIPTION	QTY.
1	UPM7632	BASE, MACHINE, 3036	1
2	upm7633	TRANSVERSE BRACING 3036 SB	1
3	UAM0275	LEG ASSEMBLY METRIC	4
4	UPM7645	PVC ROLLER 3036 METRIC	26
5	UPM3227	PVC ROL CHARCOAL DIA 1.9 X 4.50	1
6	UPM3234EV	OUTLET ROLLER BLOCK	2
7	UPM3288EV	OUTLET COVER USA SB	1
8	UPM3229EV	INLET COVER USA 2024	1
9	UPM0606	SLIDING PAD R.H.	1
10	UPM0609	SLIDING PAD L.H.	1
11	UPM4193	REAR GAP FILLER	1
12	UPM7614	ELECTRICAL BOX	1
13	UF6305	FHCS M5-0.8 x 10 mm	10
14	UPM7625	FLANGE BEARING SPACER	2
15	UPM9687	FLANGE BEARING 1" DIA	2
16	UPM2211	BUTTON MUSHROOM 22mm 1 N.C.	1
17	UF0867	LW M8	12
18	UF1318	BHCS M8-1.25 x 20 mm	4
19	UF6363	LW M6	4
20	UF0820	SHCS M6-1 x 12	4
21	UF3391	SS NYLON LOCK NUT M6-1.0	6
22	UF 3713	CARRIAGE BOLT M6 - 1 x 12	6
23	UF4006	CARRIAGE BOLT HK 3/8-16 X 3/4	7
24	UF1770	L.W. ZINC 3/8	7
26	UF1720	REG F.W. ZINC 3/8	7
27	UPM0523	FLANGE BEARING .75" DIA	4
28	UF0866	HNR M8-1.25	8
29	UPM2198	BEARING SPACER	4
30	UPM3648	BUTTON GREEN 30mm ONLY	1
31	UF1192	FHCS M6-1 x 16 mm	2
32	UF1540	HNR 3/8-16	7

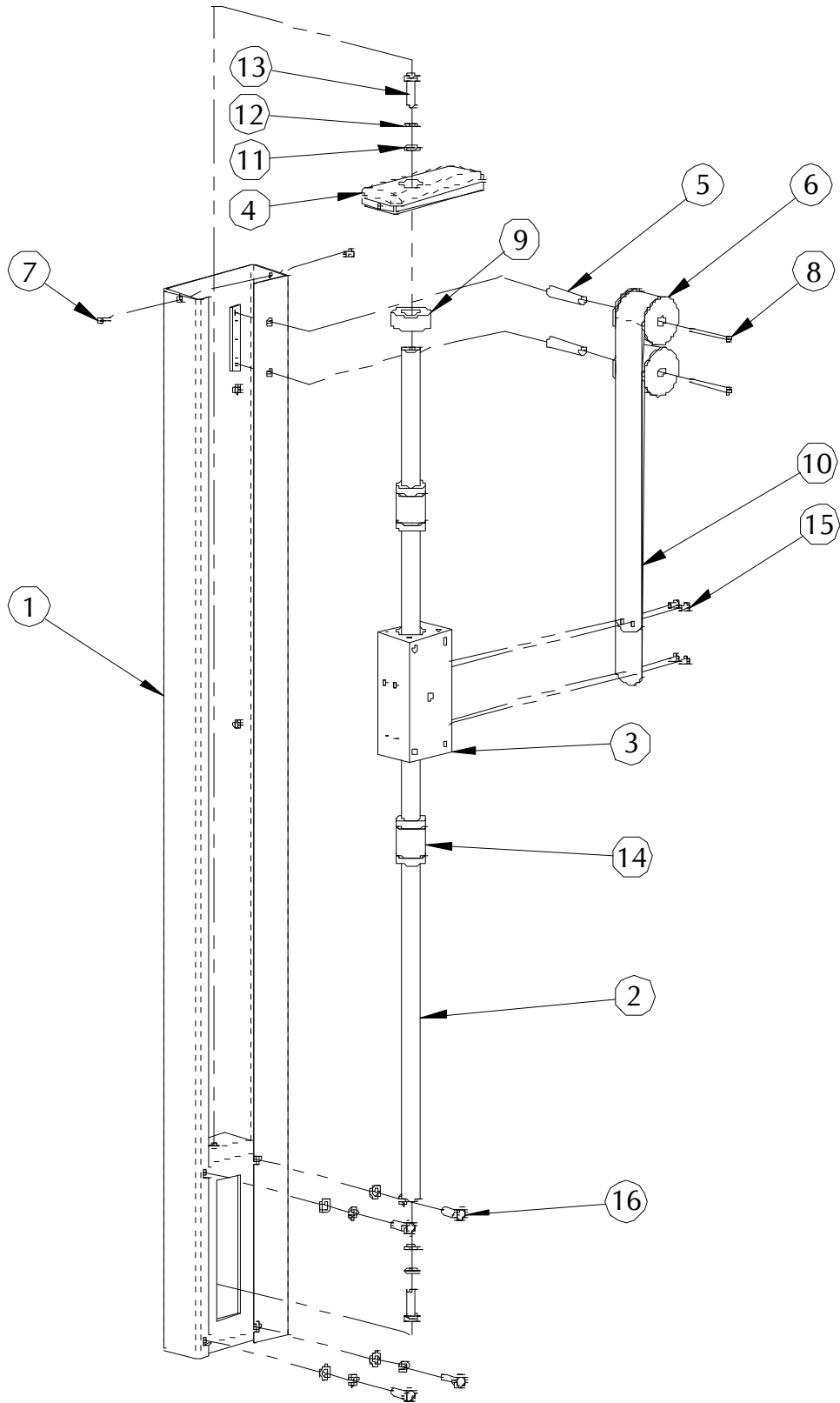
UAM0275



UAM0275

ITEM	PART #	DESCRIPTION	QTY.
1	UPM7640	LEG WELDMENT	1
2	UPM7641	LEG ADJUSTMENT	1
3	UPM7642	LEG FRICTION PLATE	1
4	UF4231	FW M12	2
5	UF4230	L.W. ZINC M12	2
6	UF6393	HHCS M12-1.75 x 35	2
7	UF6392	CARRIAGE BOLT M10-1.5 x 25	4
8	UF3680	FW M10	4
9	UF6371	L.W. M10	4
10	UF6314	HNR M10 x 1.5	4

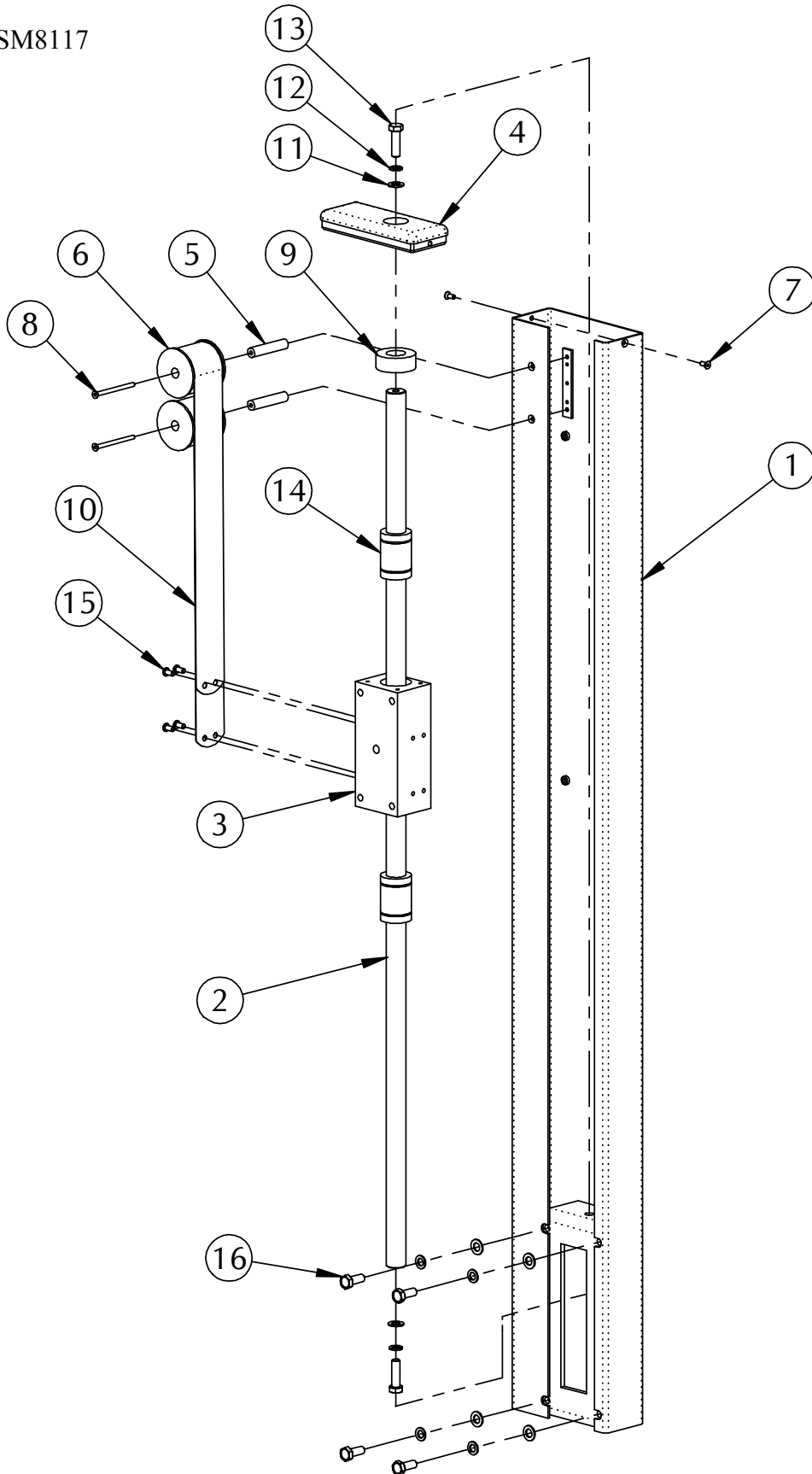
USM8116



USM8116

ITEM	PART	DESCRIPTION	QTY.
1	UPM9691	COLUMN 36 LEFT METRIC	1
2	UPM3404	COLUMN SHAFT	1
3	UPM9651	COLUMN BLOCK 40 mm BORE	1
4	UPM0741EV	COLUMN CAP LEFT SIDE	1
5	UPM0743	SPRING MANDREL SHAFT	2
6	UPM0742	SPRING SPOOL	2
7	UF5400	FHCS M5-0.8 x 12 mm	2
8	UF1157	FHCS M5-0.8 x 70	2
9	UPM2251	SAFETY BUMPER	1
10	UPM0740	CONSTANT FORCE SPRING	2
11	UF3680	FW M10	6
12	UF6371	L.W. M10	6
13	UF0301	HHCS M10-1.5 x 35	2
14	LM 25UU	LINEAR BEARING 25 mm	2
15	UF1195	BHCS M6-1 x 12 mm	4
16	UF6382	HHCS M10-1.5 x 25 mm	4

USM8117

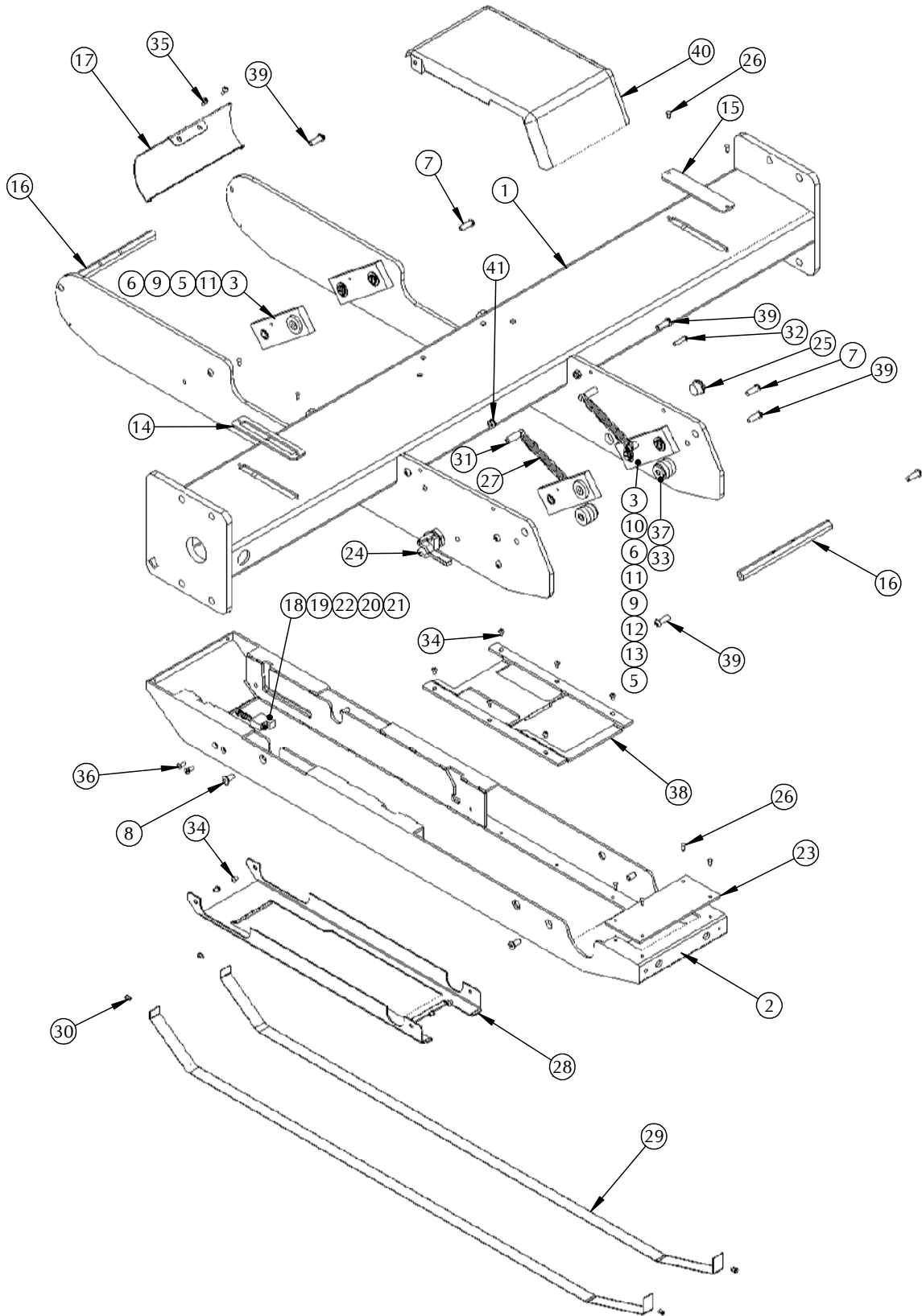


USM8117

ITEM	PART #	DESCRIPTION	QTY.
1	UPM9692	COLUMN 36 RIGHT METRIC	1
2	UPM3404	COLUMN SHAFT	1
3	UPM9651	COLUMN BLOCK 40 mm BORE	1
4	UPM2182EV	COLUMN CAP RIGHT SIDE	1
5	UPM0743	SPRING MANDREL SHAFT	2
6	UPM0742	SPRING SPOOL	2
7	UF5400	FHCS M5-0.8 x 12 mm	2
8	UF1157	FHCS M5-0.8 x 70	2
9	UPM2251	SAFETY BUMPER	1
10	UPM0740	CONSTANT FORCE SPRING	2
11	UF3680	FW M10	6
12	UF6371	L.W. M10	6
13	UF0301	HHCS M10-1.5 x 35	2
14	LM 25UU	LINEAR BEARING 25 mm	2
15	UF1195	BHCS M6-1 x 12 mm	4
16	UF6382	HHCS M10-1.5 x 25 mm	4



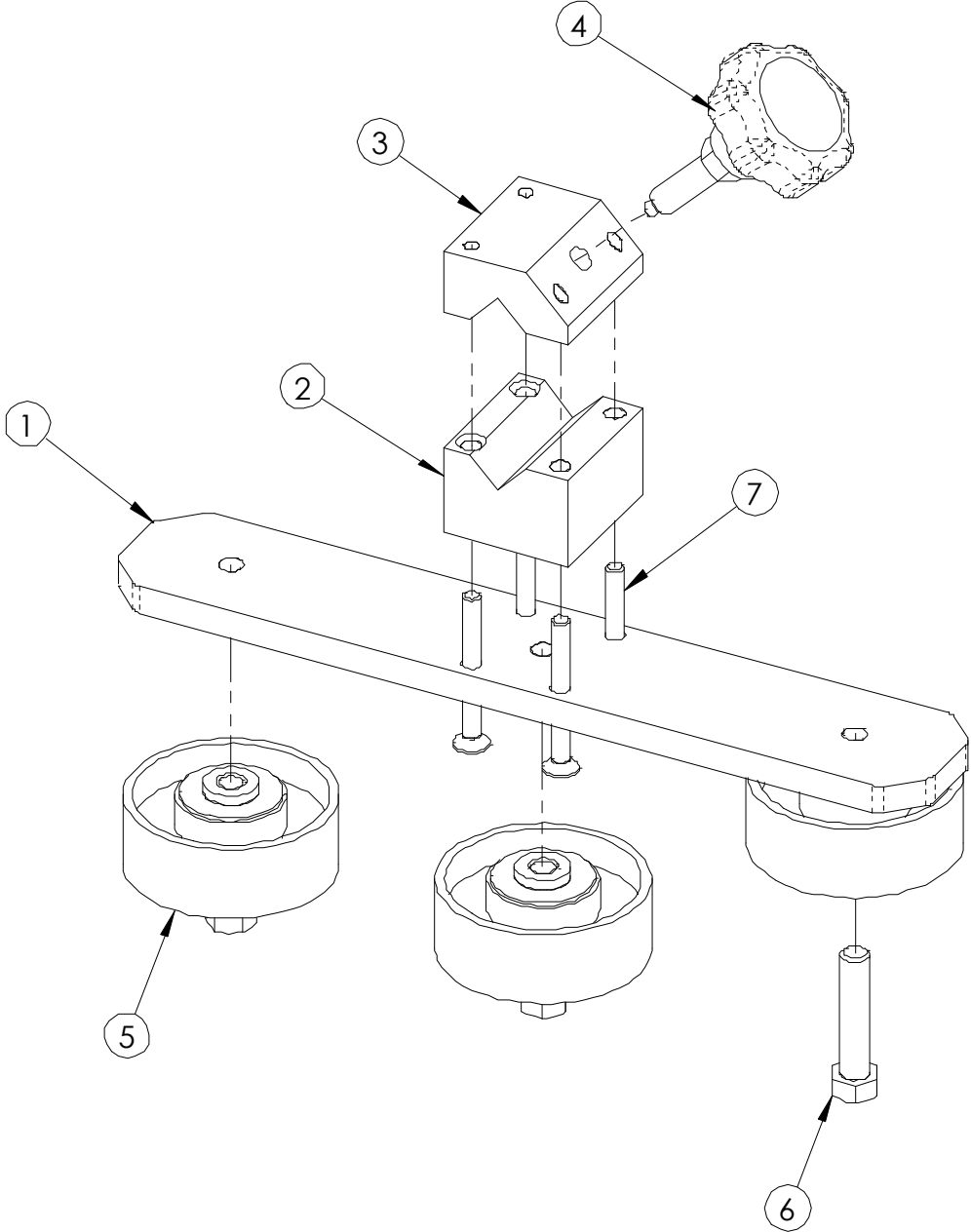
UAM0276



## UAM0276

ITEM	PART #	DESCRIPTION	QTY.
1	UPM9654	BRIDGE 3036 SB	1
2	UPM2520EV	TH BOX WELDMENT USA SB	1
3	UPM1130EV	PIVOT PLATE REAR	4
4	UPH0089EV	BEARING PERMAGLIDE 12 X 14 X 10	8
5	UPM0968EV	PIVOT SHAFT LONG T.H. BOX 222	4
6	UF6300	RETAINING RING FOR 12mm SHAFT	8
7	UF1241EV	BHCS M6-1 x 20	4
8	UF1192	FHCS M6-1 x 16 mm	4
9	UPM1158	PIVOT SHAFT SPACER	4
10	UF1940	F.W. NYLON 1/2IDx.772ODx.032TH	16
11	UPM2247EV	PIVOT SHAFT SHORT T.H. BOX 222	4
12	UPM0962EV	SPRING RETAINER	3
13	UF3646	SHCS M4-0.7 x 20	3
14	UPM1011	BRIDGE PLATE COVER SLOTTED	1
15	UPM1008	BRIDGE PLATE COVER	1
16	UPM3360EV	HEX SPACER BAR	2
17	UPM3292	REAR COVER GUARDING	1
18	UPM7541	SPRING SUPPORT M4	2
19	UF6375	SHCS M4-0.7 x 50	2
20	UPM1068	COMP.SPRING SWIVEL T.H. ASSY	2
21	UF6376	NYLON LOCKNUT M4	2
22	UF6339	SS FW M4	2
23	UPM3679	FRONT PLATE GUARDING	1
24	UPM2196	TOGGLE CLAMP	1
25	UPM2237	THREADED PLUG	1
26	UPM2192	BLACK BELLY BUTTON	8
27	UPM1042	EXTENSION SPRING	2
28	UPM3814	ET2 T.H. TOP GAP FILLER	1
29	UPM0029	STRIP, UHMW, 2" W X .03" THK	2
30	UF3510	SS POP RIVET SS-44	4
31	UPM0967EV	SPRING RETAINER LONG	2
32	UF4050EV	BHCS M4 - 0.7 x 20	2
33	UPH133	STOP, KNIFE ARM, 15/16"D.URETH.	6
34	UF6374	BHCS M4-0.7 x 6 mm	10
35	UF6364	SS BHCS M4 x 0.7 x 10mm	2
36	UF3714	M4-0.7 x 12 FHCS	4
37	UPM2168EV	STOP RETAINER TH BOX	2
38	UPM9655	TOP FILLER ET Metric	1
39	UF6325	SS BHCS M6-1 x 20	8
40	UPM2284EV	FRONT COVER	1
41	UF3391	SS NYLON LOCK NUT M6-1.0	2

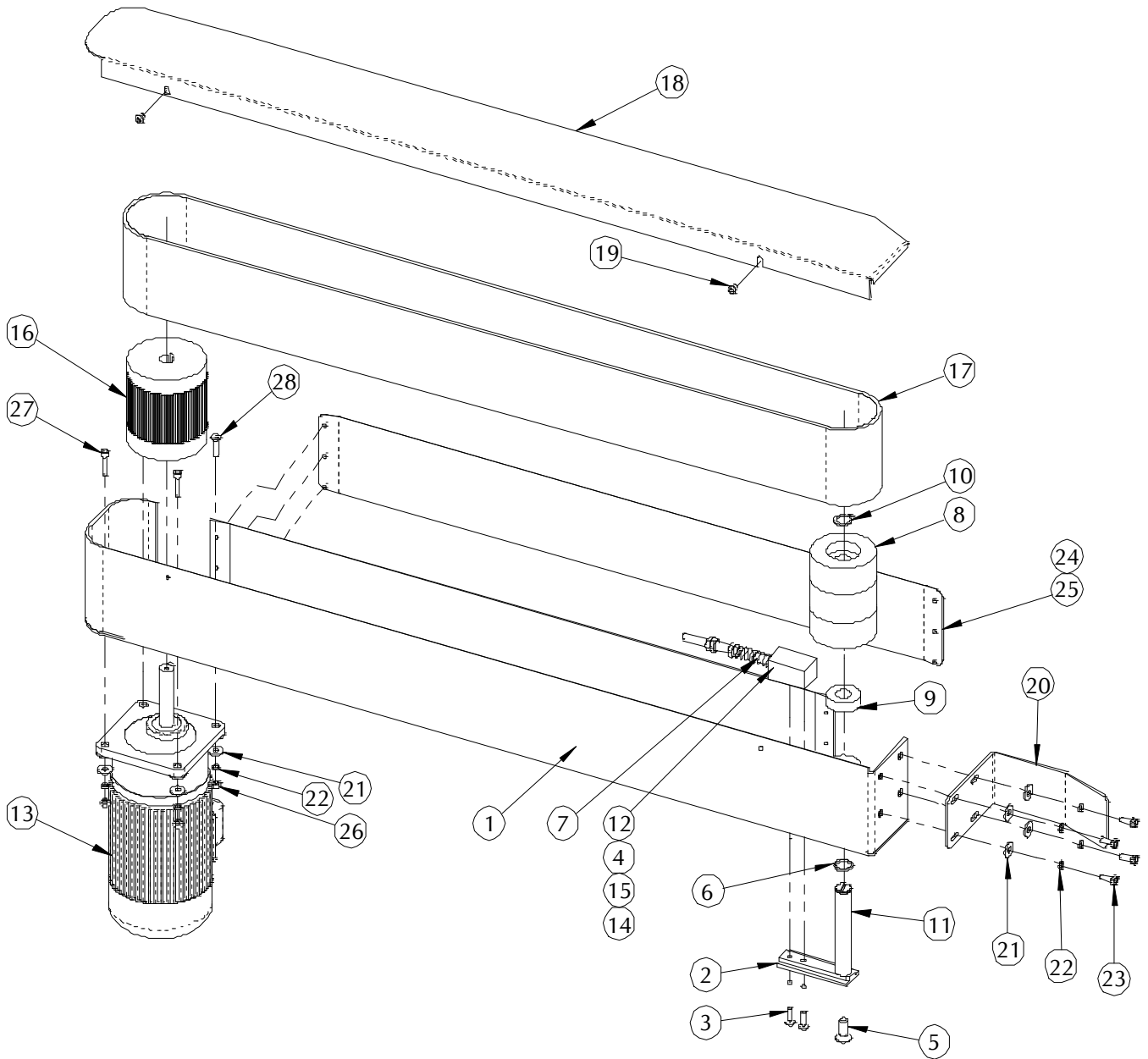
UAM0260



UAM0260

ITEM	PART #	DESCRIPTION	QTY.
1	UPM7491	WHEEL SUPPORT PLATE	1
2	UPM3285EV	GUIDE BLOCK	1
3	UPM7538EV	GUIDE BLOCK TOP	1
4	UAM0288	KNOB CW 5mm PIN USA2324	1
5	UPM1659	WHEEL 2-7/8"DIA.COMPR.GUIDE	3
6	UF0240	HHCS 3/8-16 x 1.75	3
7	UF6373	FHCS M6 - 1 x 55	4

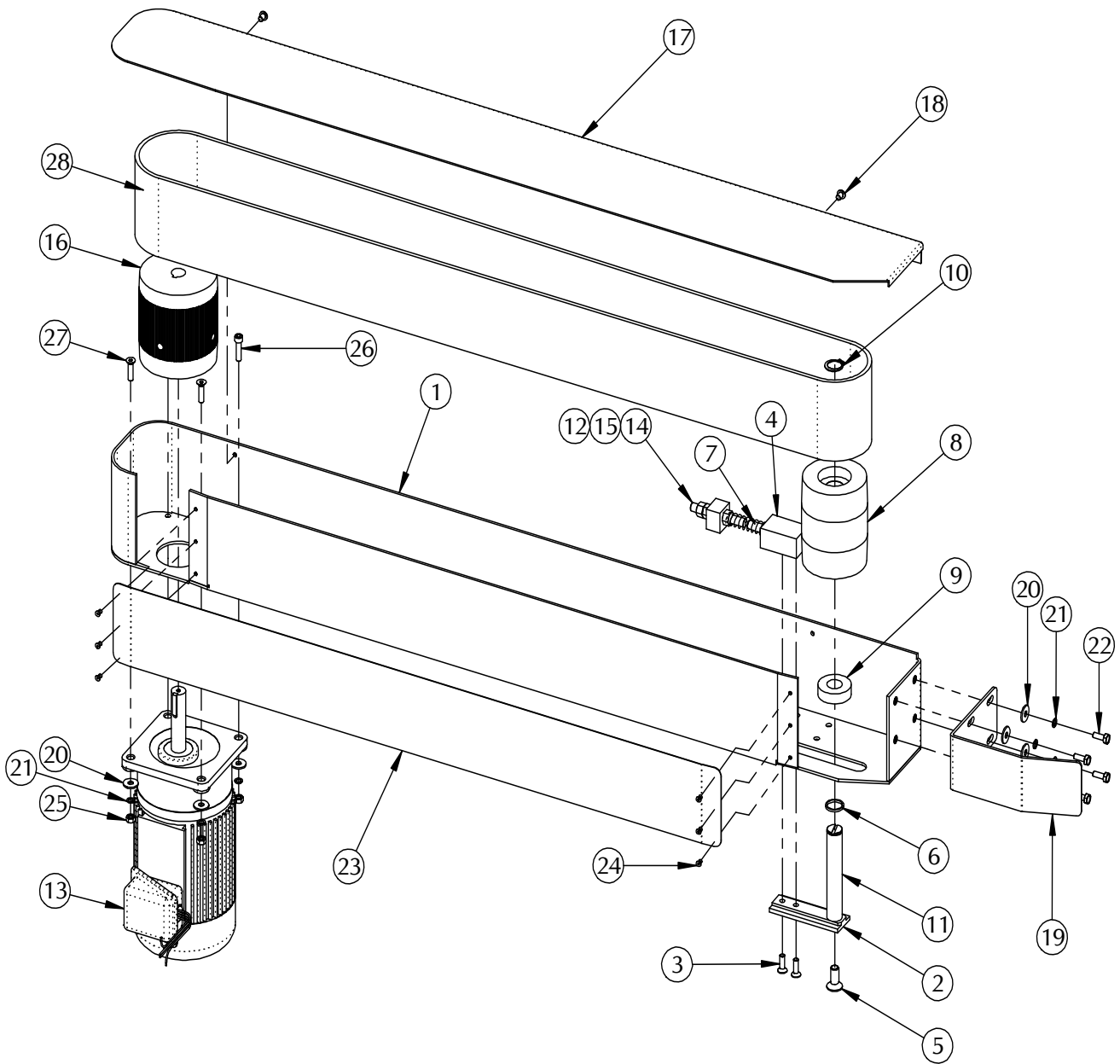
UAM1078



UAM1078

ITEM	PART #	DESCRIPTION	QTY.
1	UPM9674	DRIVE SECTION LEFT	1
2	UPM1879EV	TENSIONNER SLIDE	1
3	UF5402	FHCS M6 - 1 x 20	2
4	UPM0101EV	TENSIONNER SPRING HOLDER	1
5	UF1191	FHCS M10-1.5 x 25	1
6	UPM0109EV	IDLER PULLEY SPACER Metric	1
7	UPM0112	SPRING LOCATOR PIN	1
8	UPM0392	IDLER PULLEY	1
9	UPM0324	BEARING, PULLEY	2
10	UF2220	SNAP RING (MEDAL) SH0075PA	1
11	UPM0393EV	IDLER PULLEY SHAFT 100mm	1
12	UPM0038	DIE SPRING (DRIVE BASE)	1
13	UPM7152	1/3 HP 110V MOTOR, LONG SHAFT	1
14	UF1400	SSS HK 3/8-16 X 3	1
15	UF1610	HNJ 3/8-16	3
16	UPM9681	DRIVE PULLEY 100mm	1
17	UPM2565	BELT ENDLESS 100 mm x 2120 mm	1
18	UPM9689	DRIVE COVER METRIC LEFT	1
19	UF1206	BHCS M6-1 X 8mm	2
20	UPM9690	BOX GUIDE	1
21	UF1828	REG F.W. M6	8
22	UF6363	LW M6	8
23	UF6330	M6-1.0 X 16mm HHCS	4
24	UF3510	SS POP RIVET SS-44	6
25	UPM9686	STRIP UHMW 100 W, 850 L, 0.8 T	1
26	UF3637	HNR M6-1.0	4
27	UF0840	SHCS M6-1 X 25mm	2
28	UF1194	FHCS M6 - 1 x 25 mm	2

UAM1079

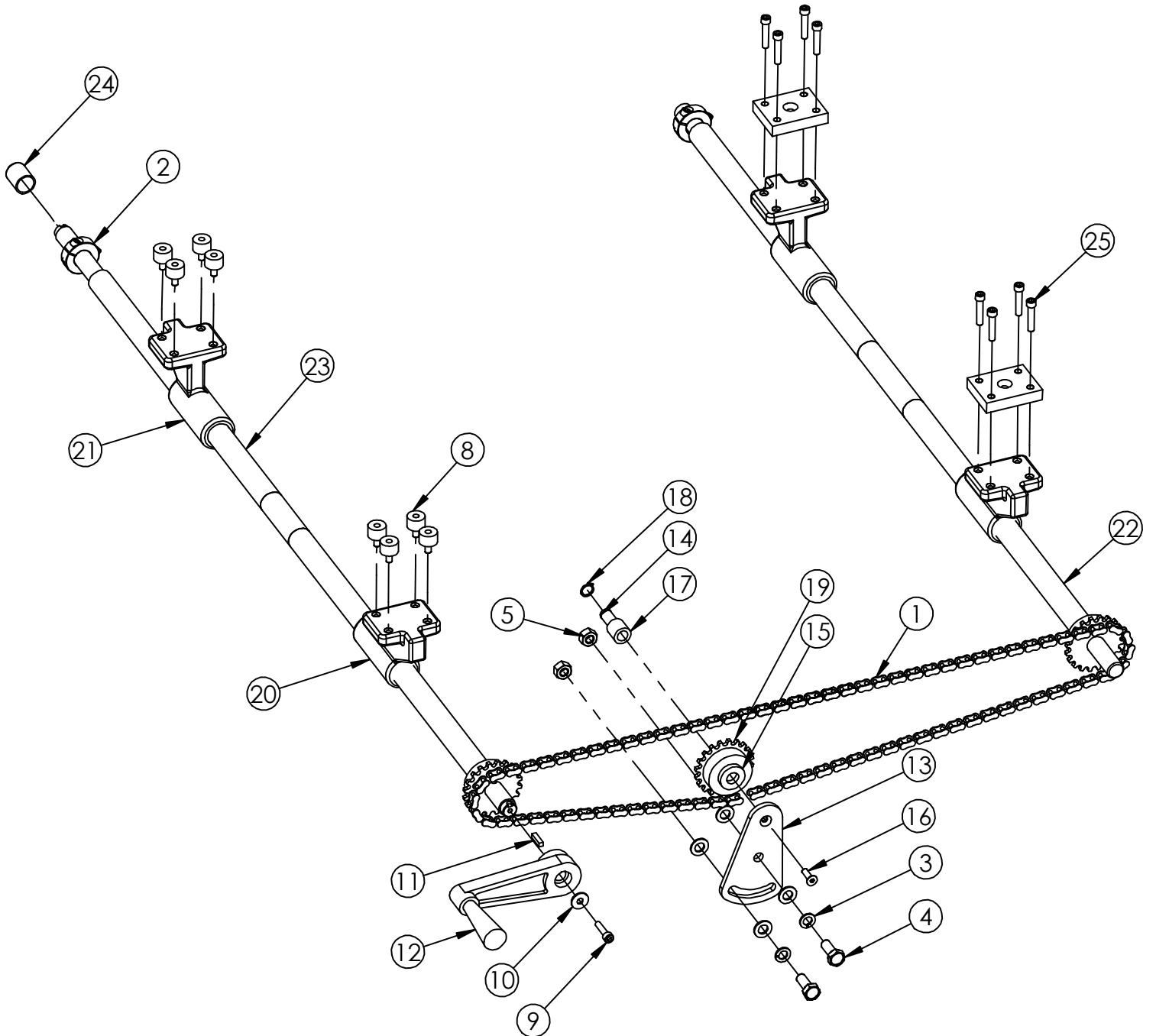


UAM1079

ITEM	PART #	DESCRIPTION	QTY.
1	UPM9673	DRIVE SECTION RIGHT 100 mm	1
2	UPM1879EV	TENSIONNER SLIDE	1
3	UF5402	FHCS M6 - 1 x 20	2
4	UPM0101EV	TENSIONNER SPRING HOLDER	1
5	UF1191	FHCS M10-1.5 x 25	1
6	UPM0109EV	IDLER PULLEY SPACER Metric	1
7	UPM0112	SPRING LOCATOR PIN	1
8	UPM0392	IDLER PULLEY	1
9	UPM0324	BEARING, PULLEY	2
10	UF2220	SNAP RING (MEDAL) SH0075PA	1
11	UPM0393EV	IDLER PULLEY SHAFT 100mm	1
12	UPM0038	DIE SPRING (DRIVE BASE)	1
13	UPM7152	1/3 HP 110V MOTOR, LONG SHAFT	1
14	UF1400	SSS HK 3/8-16 X 3	1
15	UF1540	HNR 3/8-16	3
16	UPM9681	DRIVE PULLEY 100mm	1
17	UPM9688	DRIVE COVER METRIC RIGHT	1
18	UF1206	BHCS M6-1 X 8mm	2
19	UPM9690	BOX GUIDE	1
20	UF1828	REG F.W. M6	8
21	UF6363	LW M6	8
22	UF6330	M6-1.0 X 16mm HHCS	4
23	UPM9686	STRIP UHMW 100 W, 850 L, 0.8 T	1
24	UF3510	SS POP RIVET SS-44	6
25	UF3637	HNR M6-1.0	4
26	UF0840	SHCS M6-1 X 25mm	2
27	UF1194	FHCS M6 - 1 x 25 mm	2
28	UPM2565	BELT ENDLESS 100 mm x 2120 mm	1



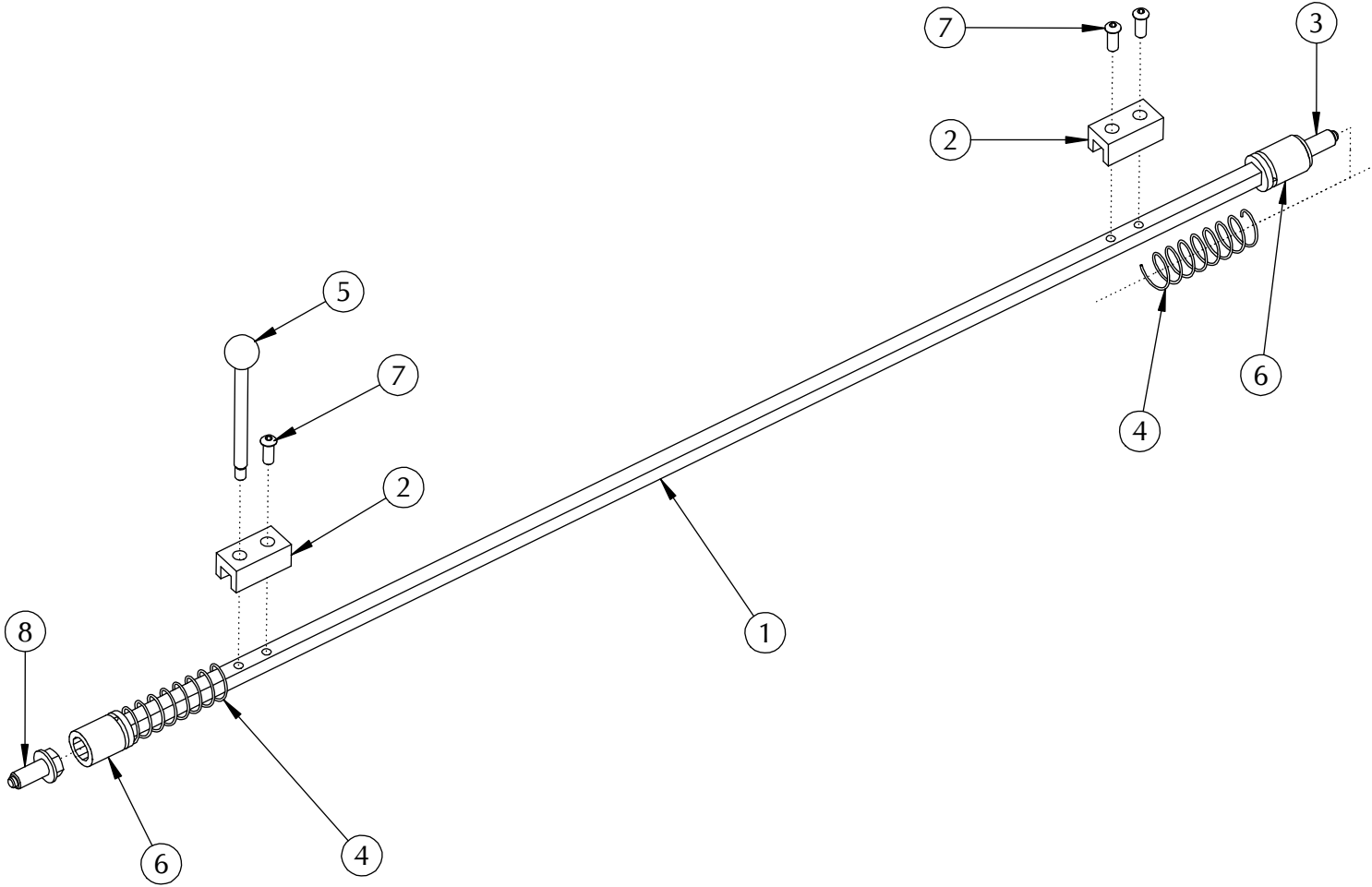
USM8113



USM8113

ITEM	PART #	DESCRIPTION	QTY.
1	UPM0691	CHAIN 35 FOR USA 2024 SB2	1
2	UF2231EV	SHAFT COLLAR	2
3	UF6371	L.W. M10	2
4	UF6383	SS HHCS M10-1.5 x 25 mm	2
5	UF6314	HNR M10 x 1.5	2
6	UF3680	FW M10	4
7	UPM3242	DRIVE SUPPORT SPACER	2
8	UPM0576	BUMPER	8
9	UF0840	SHCS M6-1 X 25mm	1
10	UF1828	REG F.W. M6	1
11	UF2210	SQUARE KEY, ZINC .188 x .188 x .75	2
12	UPM0622	HANDLE FOLDABLE	1
13	UPM0631EV	TENSIONNER BRACKET	1
14	UPM0640EV	TENSIONNER PIN	1
15	UPM0641	CHAIN TENSIONNER SPACER	1
16	UF5402	FHCS M6 - 1 x 20	1
17	UPM0639EV	SLEEVE BEARING 12 mmID 3/4OD 3/4LG	1
18	UF2170	1/2" RETAINING RING	1
19	UPM0620	SPROCKET 35B20.75ID C/W 3/16 KW	3
20	UPM0575EV	CASTING LH	2
21	UPM0574EV	CASTING RH	2
22	UPM9666	ACME SHAFT SHORT USA3036	1
23	UPM9665	ACME CRANK SHAFT USA3036	1
24	UPM2207	CAP VINYL BLACK	1
25	UF0640	SHCSHK 1/4-20 X 1-1/4"	8

USM8114

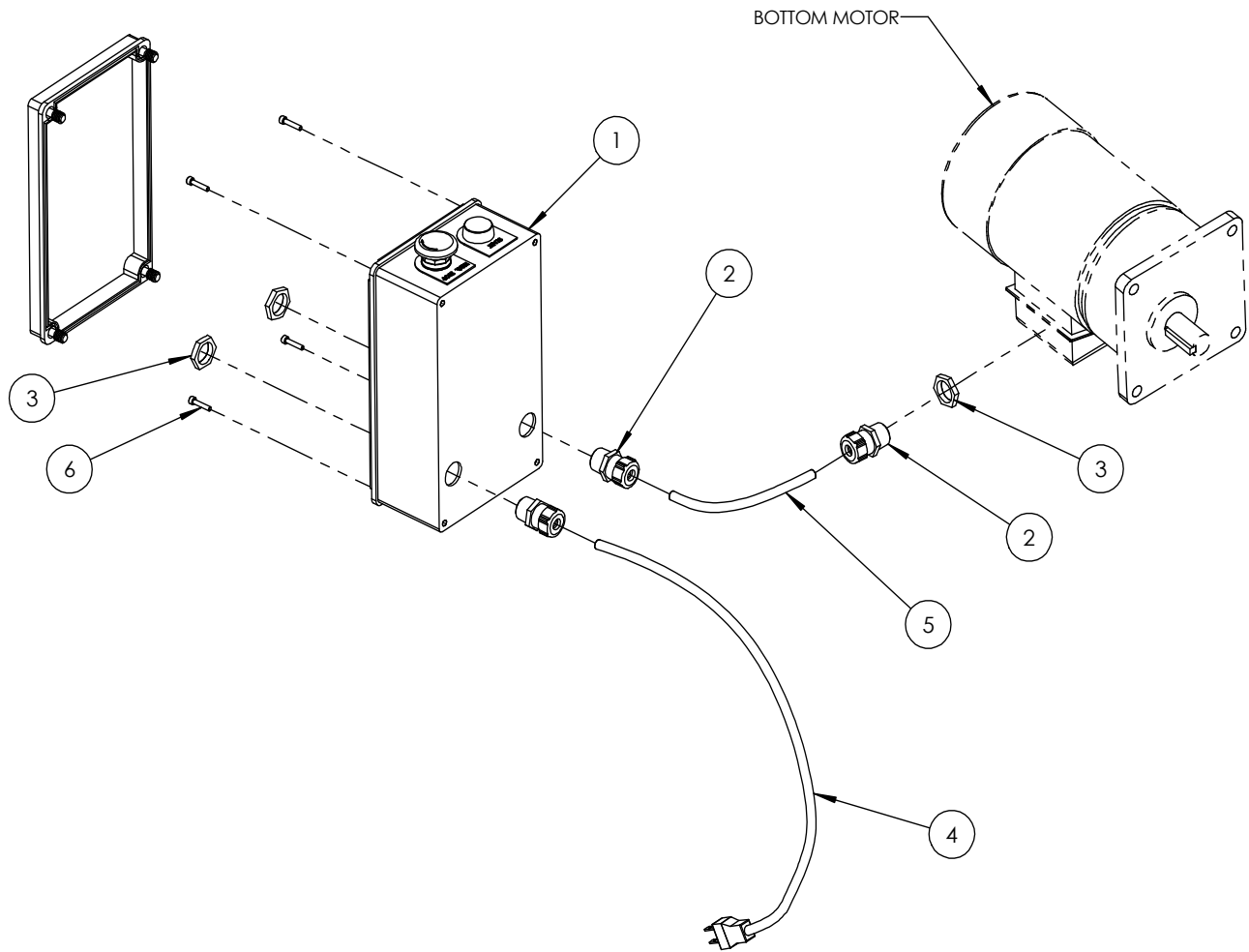


USM8114

ITEM	PART #	DESCRIPTION	QTY.
1	UPM9657	SINGLE LOCK BAR 3036	1
2	UPM9663	SINGLE LOCK BLOCK	2
3	UPM0699	FLANGED SCREW 1/2-13 R.H.	1
4	UPM2184	SPRING, C1100-065-4000-M	2
5	UPM0688	SINGLE LOCKING HANDLE	1
6	UPM0703	SHORT BOX 3/4", 1/2" DR, 12 PT	2
7	UF1318	BHCS M8-1.25 x 20 mm	3
8	UPM0698	FLANGED SCREW 1/2-13 L.H.	1

USM8092

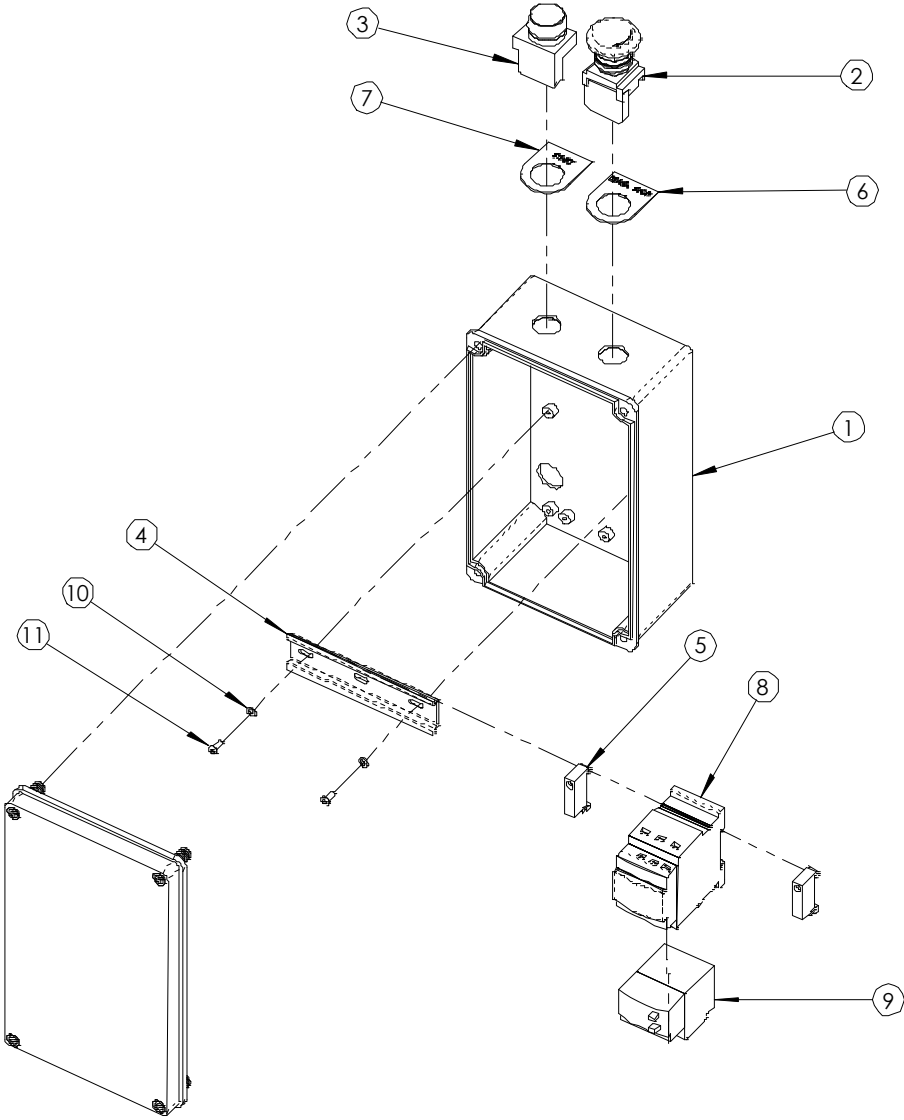
**Electric Box Installed**



USM8092

ITEM	PART #	DESCRIPTION	QTY.
1	UAM0264	ELECTRIC BOX ASSEMBLY	1
2	UPM0197EV	STR.RELF METL.LIQDTGHT M20X1.5 (8-10mm)	3
3	UPM0341EV	LOCKNUT M20 X 1.5(FOR STRAIN RELF)	3
4	UPM0209	POWER CORD, 14/3	2.7m
5	UPM0225	CABLE 18/3 TYPE SJ	1.8m
6	UF3646	SHCS M4-0.7 x 20	4

UAM0264

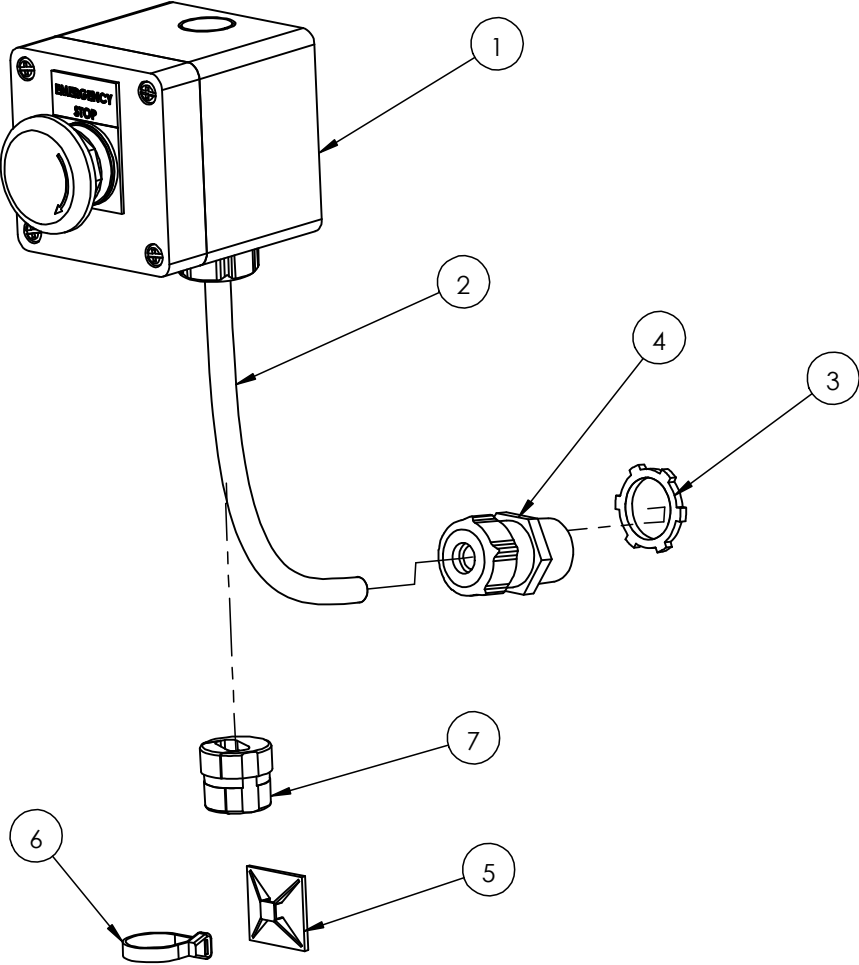


UAM0264

ITEM	PART #	DESCRIPTION	UAM0264/QTY.
1	UPM7527	ENCLOSURE DEMEX HIBOX 132 X 232	1
2	UPM2211	BUTTON MUSHROOM 22mm 1 N.C.	1
3	UPM2212	BUTTON GREEN 22mm 1 N.O.	1
4	UPM0407EV	DIN RAIL USA 2324	1
5	UPM7440EV	TB END ANCHOR FOR DN SER	2
6	UPM2209EV	LEGEND PLATE "E-STOP"	1
7	UPM2210EV	LEGEND PLATE "START"	1
8	UPM7524	MOTOR STARTER TELEMEC 110VAC	1
9	UPM2213EV	MOTOR O/L TELEMEC 2.5-4.0A	1
10	UF3710	FW M4	2
11	UF6365	BHCS M4 x 0.7 x 10mm	2



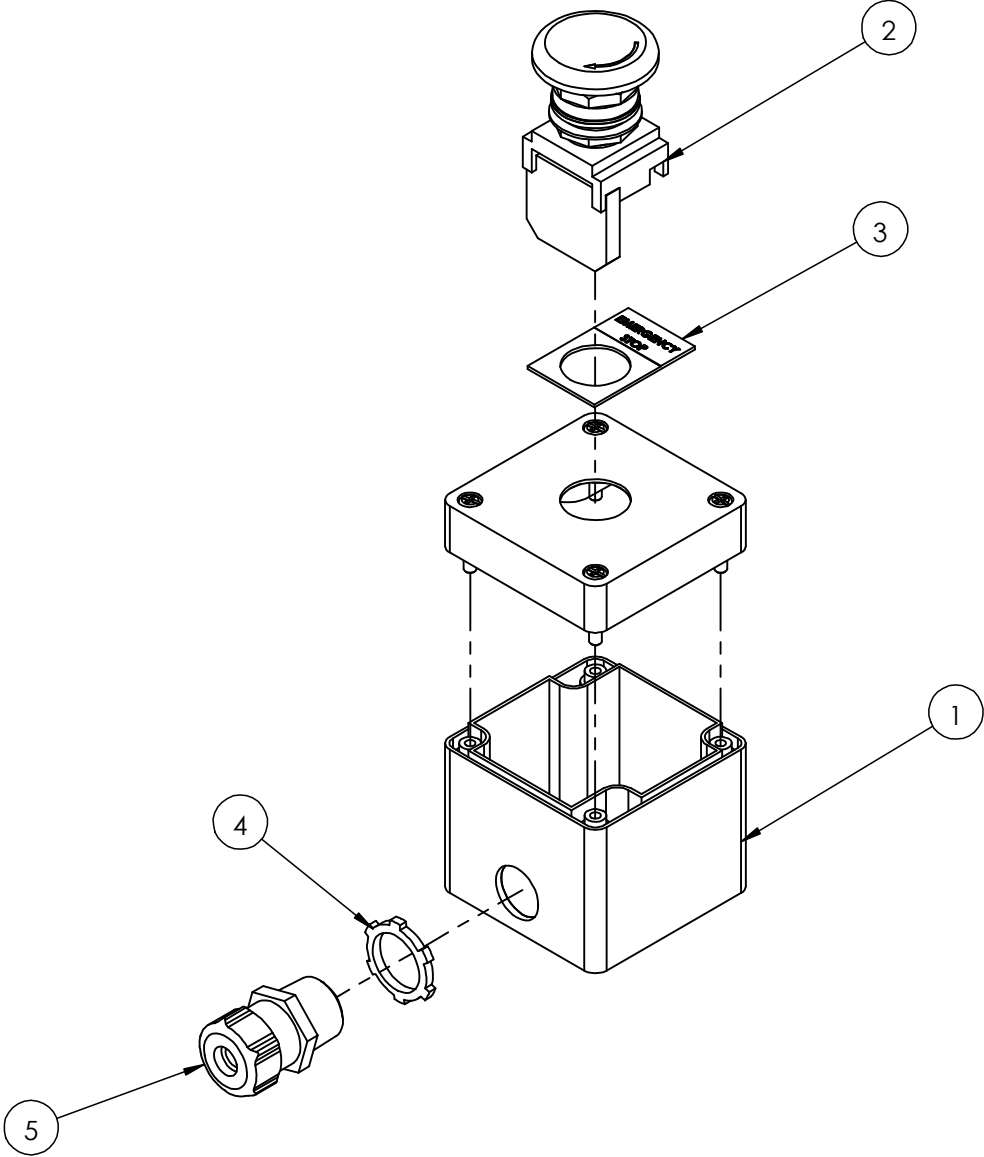
UM9003



UM9003

ITEM	PART #	DESCRIPTION	QTY.
1	UPM7293	ENCLOS PB 1 HOLE NON METAL	1
2	UPM2211	BUTTON MUSHROOM 22mm 1 N.C.	1
3	UPM2209	LEGEND PLATE "E-STOP"	1
4	UPM0341	LOCKNUT 1/2"(FOR STRAIN RELF)	2
5	UPM0197	STR.RELF METL.LIQDTGHT 1/4-3/8	2
6	UPM0225	CABLE 18/3 TYPE SJ	1
7	UPM0200	MTG. CLAMP,ADH.1.2"X1.2"	1
8	UPM0222	TY-RAP,5.5"X.14"	1
9	UPM0285	STRAIN RELIEF, NON-METAL	1

USM8075



USM8075

ITEM	PART #	DESCRIPTION	QTY.
1	UPM7293	ENCLOS PB 1 HOLE NON METAL	1
2	UPM2211	BUTTON MUSHROOM 22mm 1 N.C.	1
3	UPM2209	LEGEND PLATE "E-STOP"	1
4	UPM0341	LOCKNUT 1/2"(FOR STRAIN RELF)	1
5	UPM0197	STR.RELF METL.LIQDTGHT 1/4-3/8	1

# Electrical Drawing

